

Hedges	Species	Girth	Height	Specification
	<i>Carpinus betulus</i>	80-100cm	1+1:	Transplant - seed raised: B
	<i>Crataegus monogyna</i>	80-100cm	1+2:	Transplant - seed raised: B
	<i>Ligustrum vulgare</i>	80-100cm	0/2:	Cutting: Branched: 3 brks: B

Ornamental Mix A	Diameter	Height	Pot Size	Specification	Density
5% Species			2L	Full Pot: C	5/m ²
15% <i>Petronia officinalis</i>	30-40cm		3L	Branched: 5 brks: C	4/m ²
15% <i>Ceanothus Blue Mound</i>			3L	Full Pot: C	5/m ²
15% <i>Geranium pratense</i>	20-30cm		3L	Bushy: 5 brks: C	5/m ²
15% <i>Hebe Red Edge</i>		20-30cm	3L	Bushy: 5 brks: C	4/m ²
10% <i>Lavandula angustifolia Hidcoté</i>		20-30cm	3L	Full Pot: C	5/m ²
30% <i>Molinia caerulea</i>			2L	Full Pot: C	5/m ²

Ornamental Mix C	Diameter	Height	Pot Size	Specification	Density
% Species			2L	Full Pot; C	S/m ²
10% <i>Centranthus ruber</i>			2L	Bushy; 7 brks;	0.4/m ²
15% <i>Cytisus 'Burkwoodii'</i>	40-60cm	3L	Bushy; 5 brks;	0.4/m ²	
20% <i>Hypericum androsaemum</i>	30-40cm	3L	Full Pot; C	S/m ²	
30% <i>Molinia caerulea</i>		2L	Bushy; 4 brks;	0.4/m ²	
15% <i>Potentilla fruticosa 'Goldfinger'</i>	20-30cm	3L			
10%					

Ornamental Mix E	Height	Pot Size	Specification	Density
20% <i>Juncus sempervirens</i>	30-40cm	3L	Bushy, 6 brks.	4/m ²
10% <i>Galium odoratum</i>		2L	Full Pot: C	6/m ²
10% <i>Geum rivale</i>		2L	Full pot: C	8/m ²
30% <i>Luzula sylvatica</i>		2L	Full Pot: C	5/m ²
10% <i>Polystichum setiferum</i>		3L	Full Pot: C	4/m ²

15% <i>Skimmia x confusa</i> 'Kew Green'		30-40cm	3L	Bushy; 3 brks:	C4/m ²
Ornamental Mix G					
2% Species	Diameter	Height	Pot Size	Specification	Density
10% <i>Alpinia repens</i> 'Cattin's Giant'			2L	Full Pot; C	8/m ²
10% <i>Asplenium scolopendrium</i>			3L	Full Pot; C	4/m ²
10% <i>Daphne laureola</i>		20-30cm	3L	Branched; 3 brks:	C4/m ²
30% <i>Deschampsia cespitosa</i>			2L	Full Pot; C	5/m ²
10% <i>Geranium sanguineum</i>			2L	Full Pot; C	8/m ²

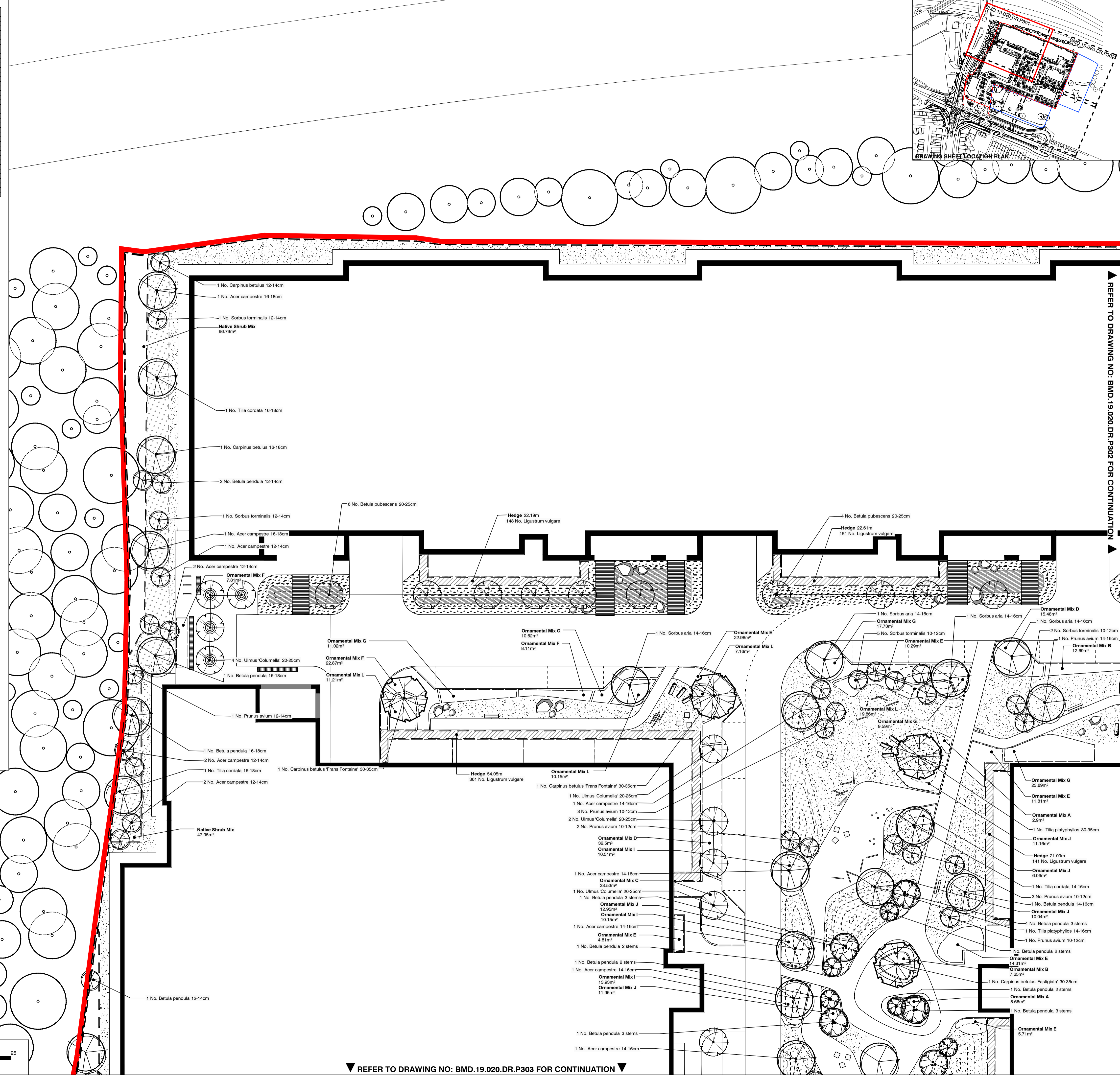
20% <i>Sarcococca hookeriana digyna</i>	20-30cm	3L	Bushy; 6 brks; C	5/m ²	
Ornamental Mix I					
% Species	Diameter	Height	Pot Size	Specification	Density
30% <i>Cornus sanguinea</i>		40-60cm	3L	Branched; 4 brks; C	4/m ²
20% <i>Cytisus scoparius</i>		40-60cm	2L	Bushy; 5 brks; C	4/m ²
5% <i>Eupatorium cannabinum</i>			2L	Full Pot; C	3/m ²
10% <i>Geranium pratense</i>			2L	Full Pot; C	3/m ²
20% <i>Geranium psilostachyon</i> (Orange)		20-30cm	2L	Bushy; 6 brks; C	4/m ²

1%	<i>Oxymus areolaris</i>		2L	Full Pot: C	4/m ²
10%	<i>Persicaria bistorta</i>		2L	Full Pot: C	4/m ²
10%	<i>Potentilla fruticosa</i> 'Goldfinger'	20-30cm	3L	Bushy: 4 brks: C	4/m ²
20%	<i>Viburnum opulus</i>		40-60cm	Branched: 4 brks: C	4/m ²

Ornamental Mix K					
%	Species	Diameter	Height	Pot Size	Density
10%	<i>Asplenium scolopendrium</i>			3L	Full Pot: C 4/m ²
25%	<i>Corylus avellana</i>		60-80cm	3L	Branched: 3 brks: C 3/m ²

20%	<i>Carex pendula</i>		2L	Full Pot. C	4/m ²
20%	<i>Corvus avellana</i>	60-80cm	3L	Branched; 3 brks. C	3/m ²
10%	<i>Geum rivale</i>		2L	Full pot. C	5/m ²
10%	<i>Hypericum androsaemum</i>	30-40cm	3L	Bushy; 5 brks. C	4/m ²
20%	<i>Ilex aquifolium</i>	40-60cm	3L	Bushy; 3 brks. C	3/m ²
10%	<i>Prunus laurocerasus</i> Etia	40-60cm	3L	Bushy; 4 brks. C	4/m ²

--	--	--	--	--	--	--

[illegible]

BOUNDARIES

APPLICATION BOUNDARY
AS PER COLLADO COLLINS DRAWINGS

OWNERSHIP BOUNDARY
AS PER COLLADO COLLINS DRAWINGS

$$[z_1^2, z_2^2, z_3^2]$$

D	Updated to latest Architectural layouts	24.07.20	
C	Updated to latest Architectural layouts	14.07.20	
B	Western edge planting update	25.11.19	
A	Updated to latest P3 Architectural layouts	04.10.19	
Rev	Description	Date	
Purpose of Issue			
PLANNING			
Bradley Murphy Design Ltd 6 The Courtyard Hatton Technology Park Derk Lane Hatton Warwickshire CV35 8XB			
t: 01926 676496 e: info@bradleymurphydesign.co.uk www.bradleymurphydesign.co.uk			
Client			
INLAND HOMES			
Project			
HILLINGDON GARDENS			
Drawing Title			
PLANTING PLAN (SHEET 1 OF 4)			
Drawn DB	Checked CC	Approved LB	Date 13/09/2019
Job No. 19.020	Scale 1:200	Sheet Size A1	Revision D
Drawing Number BMD.19.020.DR.P301			